

# SkyLink 2510



## SKYLINK 2510

The SKYLINK 2510 GPS device signals vehicle location and driving records to a website for owners to manage and track their vehicles easily via internet access terminal, it is safe and effective-oriented especially appropriate for taxi, logistic, bus company and fleet owner to handle vehicles wisely and record driving data precisely.

SKYLINK 2150 sending vehicle's essential data to vehicle monitor center via proven and stable GSM/3G communication network, it is fit for logistic and trucks company to trace consignment and dispatch vehicles efficiently, supervisors and vehicle drivers communicate with control center real-time. The GPRS transmit duration can be flexible settings for saving traffic of data package and communication expenses.

### Characters

- **Input voltage:** 9~30V
- **Working current:** peak: 150mA/@12V  
standby: 75mA/@12V
- **Operating temperature:** -10°C~55°C
- **Storage temperature:** -40°C~65°C
- **IO Interface:** Input x 2 ,Output x 2 ,RS232 x 1  
ACC Input x 1 , Analog Input x 1
- **LED display:** GPS, 3G
- **SIM:** 3G WCDMA/UMTS Dual-band: 900/2100 MHz  
2G GSM/GPRS/EDGE Quad-band: 850/900/1800/1900 MHz
- **GPS module:** U-BLOX GPS
- **RAM:** 4MB
- **Data output:** GPS device number, longitude and latitude,  
speed, direction, date, time and status
- **Size:** 30 x 67 x 87 mm
- **Installation:** External fix and self-adhesive

### Accessories



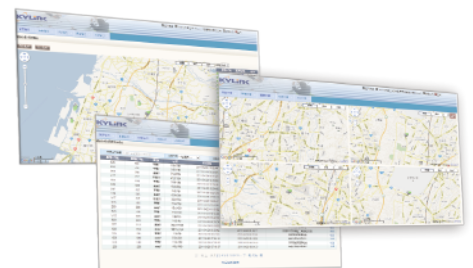
GSM antenna



GPS antenna



Power cord



[www.kylink.com.tw](http://www.kylink.com.tw)

**KYLINK COMMUNICATIONS CORP.**